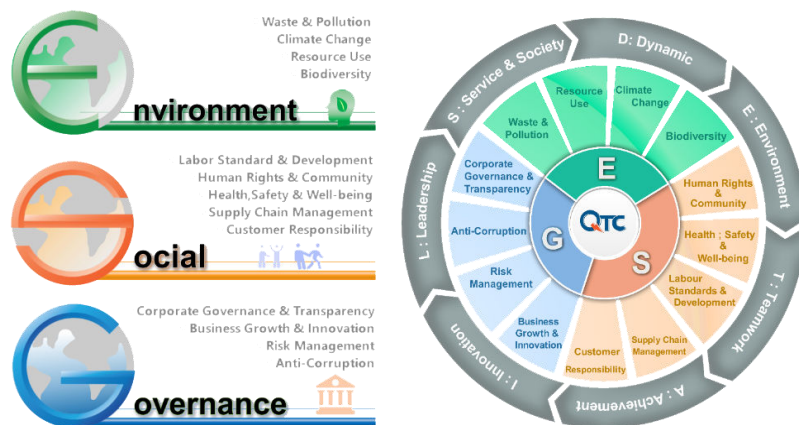


# QTC & Sustainability

The Company has established the Corporate Sustainability Promotion Committee composed of department managers of various work sections. The Committee is authorized to monitor performance in line with policies and promote activities corresponding with the sustainable management framework and the sustainability equation, “Q+R=S”. Determining the sustainability management framework is an important mechanism for driving internal management at the policy level and the management level in order to lead to practice and project operations in line with the specified framework. The Company will foster beliefs and build understanding for every employee in line with the sustainability equation that doing good work with quality, accuracy and responsibility will build satisfaction for all stakeholders, build strength and sustainability for employees and the organization. The Company has the following sustainability framework and equation:

## QTC Sustainability Framework



## Operating Structure

